



LIP COMPANY LIMITED
SOUTH SUDAN'S PIONEER INDUSTRIAL PARK



COMPANY PROFILE

Table of Contents

About Us	2
Location and Address	2
Vision	3
Mission	3
Core Values	3
Benefits of Engaging Us	5
The Industrial Park	6
Resident Industries	7
Winners Millers Company	7
Ballast Crushing Factory	7
Water Factory	7
LIP Millers	8
Baraka Refinery	8
LIP Piggery	10
LIP Farms	12
LIP Recreation Centre	14
Management Team	15
Organization Structure	15
Corporate Social Responsibility (CSR)	17

About Us

LIP Company Limited, located on the outskirts of Juba near River Luri is a privately owned company made up of South Sudanese as shareholders. It brings a conglomerate of companies and houses a myriad of upcoming industries ranging from petroleum, printing, agribusiness, abattoirs, pharmaceuticals, plastics, and water bottling.

LIP Company is the first development of this nature in South Sudan and has been conceptualized to help transform South Sudan into a regional economic hub and reduce the over reliance on imports besides creating employment and poverty alleviation. The creation of LIP goes a long way in ultimately fulfilling the visions of the great leaders of the country.

The company is one of the fastest growing companies in South Sudan. The Company is currently engaged in establishing one of the first and pioneer industrial park, with a myriad of activities that will help sustain and accelerate Africa's economic growth, meet the aspirations of South Sudan's people and through its water factories that aim at distribution and supply of clean piped water in Juba City and its surroundings. The creation of LIP goes a long way in ultimately fulfilling the visions of the great leaders of the country.

Location and Address

LIP Company Limited has its Head Office in Juba City and also in Luri area of Juba County, near River Luri, West of Juba City.



Vision

To be a leading Industrial Park determined to develop and manufacture various products delivering world class uncompromised quality industrial and property cluster solutions to our customers while committed to protecting the environment and the community with good corporate governance and sustainable development strategies.

Mission

Committed to the production of high-quality goods and services that are for local and international markets with focus on customer satisfaction, investment effectiveness and value addition through innovative culture in the organization.

Core Values





Our strength lies in humility, vast experience, team work, thorough brainstorming and meticulous execution of our programs.

Benefits of Engaging Us

The Company prides itself as a leading employer in South Sudan and contributes significantly to the national revenue and domestic production. Our range of industries all ensure that we supply diverse products to the market and will always take a lead in local production and supply of essential commodities in South Sudan and international markets.

The Company has competent staff dedicated to serve our customers and the people of South Sudan. The Company has significantly invested in the employees, and usually giving the employees the best possible work environment, and encourage their input and collaboration in the business.

The Company has remained focused on optimizing the manufacturing process, and then building the industries based on processes and procedures that are ideal. Our staff are highly engaged to ensure there is maximum efforts to facilitate workflow, minimize errors, and quicken production time. Hence, we always focus on employing experts and qualified staff.





LIP COMPANY LIMITED
SOUTH SUDAN'S FIRST INDUSTRIAL PARK

The Industrial Park

The Industrial Park is located on the outskirts of Juba in Luri. It has over 2,000 acres of land for current use and future expansion. The Industrial Park is one of the largest facilities of its kind in South Sudan. It offers a one-stop shop that has a wide range of industries producing a wide array of business products and services from petroleum, printing, agribusiness, abattoirs, piggery, warehouses, plastics and water bottling.

It aims at establishing long manufacturing lines that are fully mechanized and automated to ensure one-stop manufacturing, from the conversion of raw material through to finished products. This is going to meet all the needs of our people in terms of quality, standards and delivery.

This is the first development of this nature in South Sudan and has been conceptualized to help transform South Sudan into a regional economic hub and reduce the over reliance on imports besides creating employment and poverty alleviation. It is going to be the pride of South Sudan to have locally produced goods and imports reduced drastically.

Resident Industries

The Company has focused on ensuring there is production of local commodities and products in South Sudan. Among other existing industries and projects of significance and again all pioneer in South Sudan include:

Winners Millers Company

Winners Millers Company was set up in 2017 with the sole aim of processing maize flour and chicken feeds for local consumption and export.

Currently it is exporting chicken feeds to Kenya. It has state of the art machines that are capable of processing 30 tons of maize flour per day.

It offers great employment opportunities for the local youth and is encouraging local farming.



Ballast Crushing Factory

The Company has been engaged in the supply of aggregates which are much needed in civil constructions such as road, houses and other infrastructural projects.

In order to expand the supply of these vital aggregates, the Company has recently acquired an aggregate/ballast crushing factory from Horizon Company Limited. All these expansions in terms of factories and aggregate sites will go a long way in in meeting the ever-increasing demand for aggregate required in road and housing construction.

Water Factory

LIP Company Ltd is also engaged in the supply and distribution of clean drinking water in Juba. As part of its water supply activities and expansion, the Company has recently acquired the largest water treatment plant in South Sudan.

The water factory located near the River Nile is supplying clean drinking water to the entire Juba city and its immediate environs.

This water plant is under expansion and the Company currently intends to supply bottled and clean piped water. The Company has recently entered into an agreement with the Ministry of Water Resources and Irrigation of the Republic of South Sudan and the South Sudan Urban Water Corporation with the ultimate goal of distributing and supplying clean piped water within Juba City.



LIP Millers

LIP Millers is a subsidiary of LIP Company Ltd and aims to produce at least 500 tons per day of maize flour. It is located at the Luri Industrial Park. Its facilities are now 80% established and nearing its completion.

This industry aims at local production of food products, encourage local farmers and reduce imports. Many young people are currently employed in this project and are earning income that is sustaining them to have good standard of living. Thus, once the project is completed, there will be increased employment.

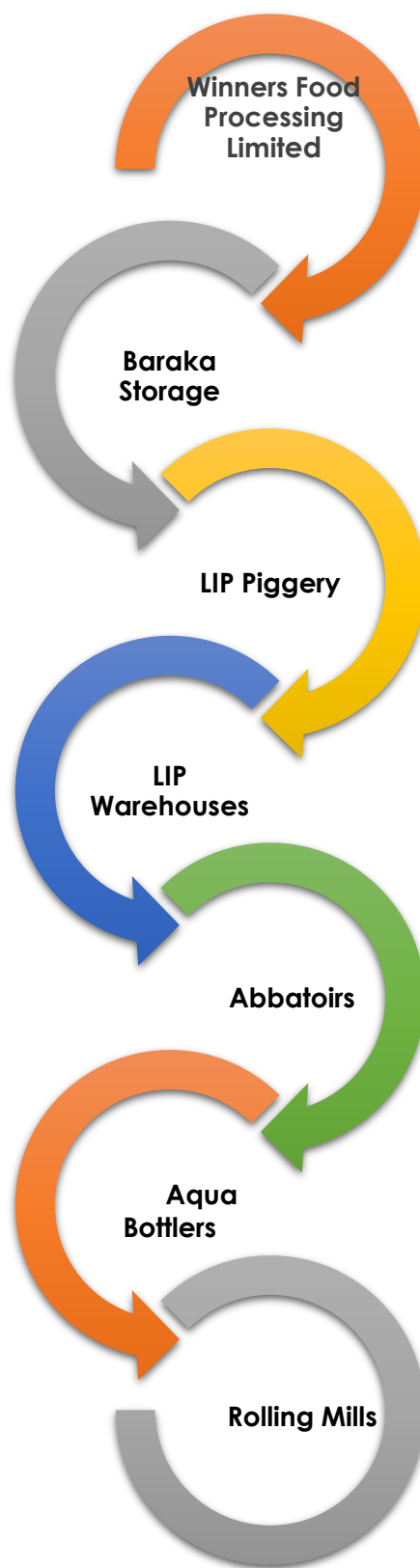


Baraka Refinery

Baraka Refinery is intended to offer 24 million oil storage facility and currently it is 85% complete. Once completed, it will reduce fuel imports and reduce fuel prices and inflation in the country.



Upcoming Companies



LIP Piggery

Lip piggery whose construction is in progress will be the biggest in South Sudan upon completion, with over 1,000 pigs reared to provide pork to meet both local and export consumption.





LIP COMPANY LIMITED
SOUTH SUDAN'S PIONEER INDUSTRIAL MARK



LIP COMPANY LIMITED
SOUTH SUDAN'S PIONEER INDUSTRIAL MARK





LIP Farms

The project focusses on agribusiness. The farm has over 10,000 trees each comprising of oranges, mangoes, guavas and bananas targeting both local and international markets.

LIP COMPANY LIMITED
SOUTH SUDAN'S PIONEER INDUSTRIAL PARK





LIP COMPANY LIMITED
SOUTH SUDAN'S PIONEER INDUSTRIAL PARK



LIP Recreation Centre

LIP vision goes beyond alleviating what is self-evident problem – that of stifling urban congestion and a dearth of quality recreation for fun, tranquility, freshness and relaxation



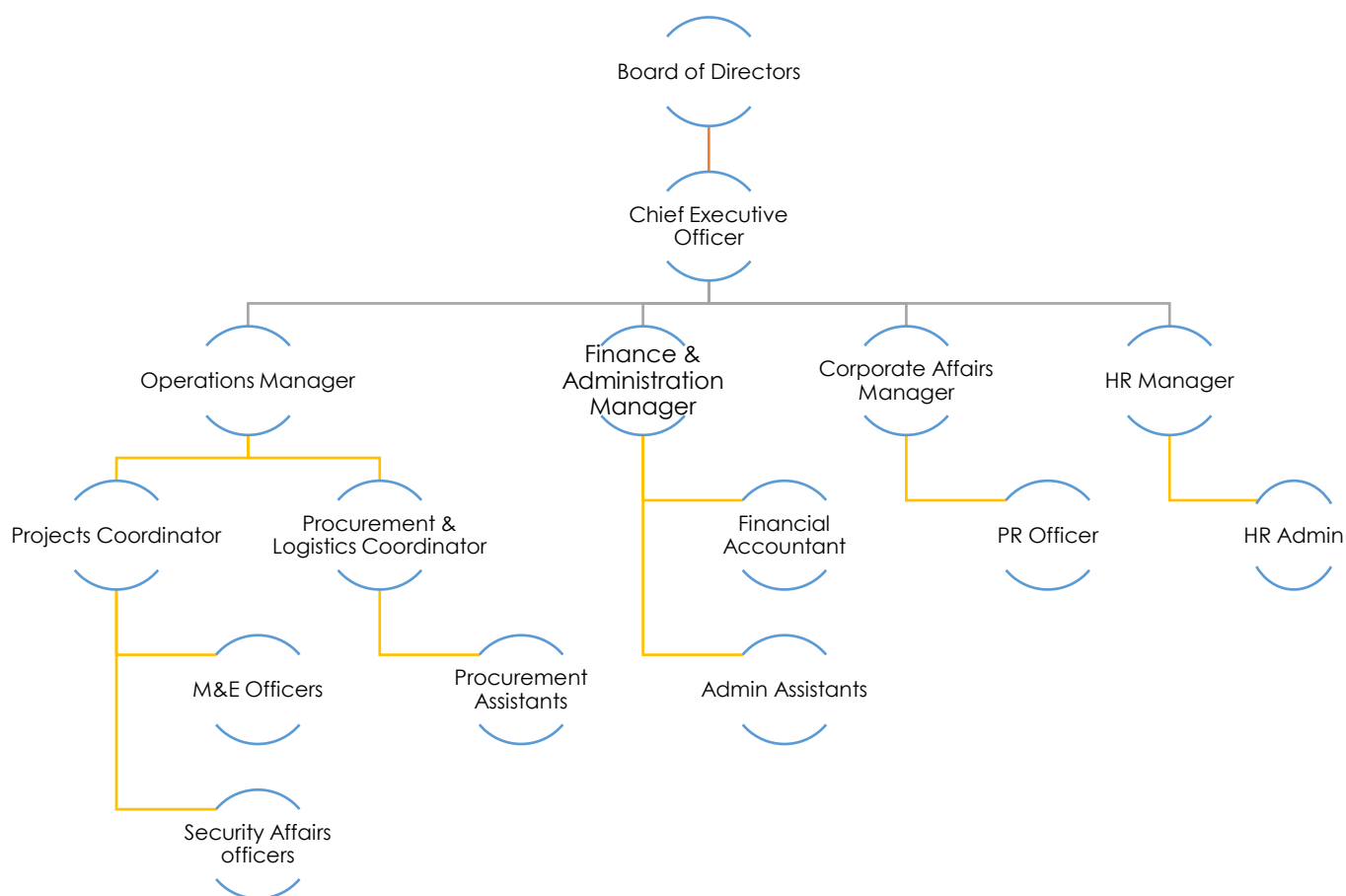
Management Team

The management team of LIP is headed by the Chief Executive Officer who reports to the President. The Chief Executive Officer is assisted by a team consisting of the Manager, Finance & Administration and Operations Manager.

Organization Structure

While the Board of Directors is the principal policy-making body of the company that decides on the company's policies and ensures that the general policies decided by the shareholders and the Directors are implemented; the Company governance is executed by the following organs:

- 1) The Shareholders acting collectively in their meetings annually or at extra-ordinary meetings;
- 2) The Board of Directors; and
- 3) The Management team which comprises of professional and technical staff who work as a team to ensure the investment effectiveness and maintain the competitiveness and customer-driven activities of the company. The Management is headed by the Chief Executive Officer and under him/her are the other line managers.



Prof. George Achoki.

Chief Executive Officer



Prof. George Achoki is the Chief Executive Officer (CEO) of the Company. He holds a PhD in Human Resource Accounting and has a vast experience in organizational administration and deployment of strategic growth policies. He is a consultant in Manpower services adding to his over two decades experience in consultancy services.

Academically, Prof. Achoki serves currently as Associate Professor of Accounting and Finance at USIU-Kenya. He previously held the position of International Co-ordinator of USIU's MBA Program where he oversaw partnerships with leading Universities. He was consulted widely by Commission of Higher Education and Council for Higher Education.

He further serves as presidential appointee in the board of Commission for Energy Regulation and also previously received Presidential appointment to serve in Export Promotion Council as a director in charge of resource mobilization.

Prof. Achoki is also the Chairman of the Childfund International. He brings into Company invaluable experience and expertise.

Corporate Social Responsibility (CSR)

The main CSR practice are on **environment**, **health**, **youth** and **women enterprise intervention** which all impact on the vision of LIP.





LIP COMPANY LIMITED
SOUTH SUDAN'S PIONEER INDUSTRIAL PARK



OUR CONTACTS

Location: Luri Industrial Park, Luri, Juba County

Tel: +211-923969696

Email: info@licompanyltd.com

Website: www.lipcompanyltd.com